

Networked Campus Contacts

E. William Wischusen
Louisiana State University and A&M College
Department of Biological Sciences
104 Life Sciences Bldg
Baton Rouge, LA 70803

Stan Napper
Louisiana Tech University
College of Engineering and Science
PO Box 10348
Ruston, LA 71272

Paul Sisson
Louisiana State University in Shreveport
College of Sciences
One University Place
Shreveport, LA 71115

Robert H. Miller, Jr.
Southern University and A&M College
College of Sciences
PO Box 9440
Baton Rouge, LA 70813

Eric Pani
University of Louisiana at Monroe
Academic Affairs
700 University Ave
Monroe, LA 71209

Gene D'Amour
Xavier University of Louisiana
Office of Resource Development
1 Drexel Drive
New Orleans, LA 70125

2009 Summer Projects

“Photonic Nanosensors for Reactive Oxygen Species and Oxidative Stress in Diseases”
~ Kui Chen (LSU-S)

“Statistical Analysis of Computer Models of Biological Systems”
~ Garrett Dancik (NSULA)

“Divide-Conquer Based Approach for Direct Frequent Sequential Pattern Mining”
~ Karen Kun Zhang (Xavier)

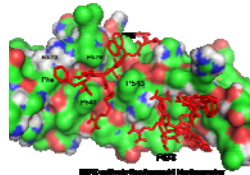


Image by Seetharama Satyanarayanajois

Research Opportunities

Pilot and Full Projects, request for application will be advertised when available.

Summer Projects, research opportunities for junior faculty can be found on the LBRN website,

<http://lbrn.lsu.edu/SRP>

Application Deadline

February 10, 2010

LBRN is funded through the National Institutes of Health, National Center for Research Resources for the purpose of improving the competitiveness of Louisiana biomedical researchers.

09/2009



Louisiana Biomedical Research Network (LBRN)

Research Opportunities for Junior Faculty

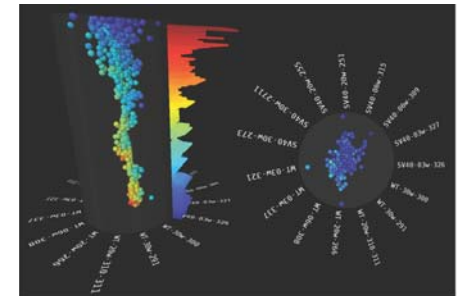


Image by Marjan Trutschl

Louisiana Biomedical Research Network
Department of Biological Sciences
Louisiana State University
131 Life Sciences Bldg
Baton Rouge, LA 70803

225-578-1848 (phone)

225-578-2597 (fax)

LBRN@lsu.edu (email)

<http://lbrn.lsu.edu>

LBRN

Established in September 2000 with funding by the NIH, through the NCRR Grant P20RR016456, the LBRN is committed to raising the research competitiveness of Louisiana researchers.

The goals of LBRN are to:

Establish a research network to support interdisciplinary biomedical research throughout Louisiana by providing outreach opportunities to all institutions within the State, particularly primarily undergraduate institutions.

Strengthen the research capabilities of the networked institutions through the support of research projects in areas appropriate to each of the institutions by promoting collaborative research projects and providing mentoring for junior faculty and students.

Recruit qualified junior faculty and students from across Louisiana, to participate in the research programs developed at the lead campuses.



Full Projects

“Visual and Analytical Tools for Cluster Analysis”
~ Urska Cvek (LSU-S)

“Role of gM in KSHV Entry, Egress and Virus-Induced Cell Fusion”
~ Oswald D’Auvergne (SUBR)

“Gene Expression Data Mining for Physiological Discovery” ~ Sumeet Dua (LA Tech)

“NR4A Regulation of Organogenesis”
~ Chris Gissendanner (ULM)

“Regulation of Prostate Gene Expression by 1,3 butadiene” ~ Wesley Gray (SUBR)

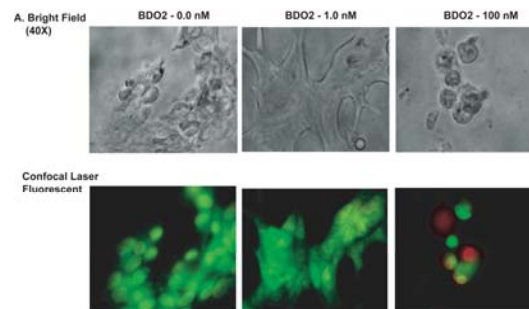


Image by Wesley Gray

“The Role of Chromatin in HSV-1 Gene Regulation”
~ Victor Hsia (ULM)

“Glucosylceramide Synthase in a Novel Target for Cancer Treatment”
~ Yong-Yu Liu (ULM)

“Lacrimal Gland Bioinformatics: A Neural Connection of Dry Eye and Aging”
~ Doan Nguyen (LSUHSC-NO)

“Neural Network-Enhanced Stereoscopic Visualization for Interactive Analysis of Multidimensional Biomedical and Other Data Sets”
~ Marjan Trutschl (LSU-S)

Pilot Projects

“Modeling Protein-Substrate Interactions in the Lipoxygenase Family Using Computational Approaches” ~ Shuju Bai (SUBR)

“The Study of Neuronal Synchrony using Coupled Oscillator Model for Brain Function Restoration” ~ Alan Chiu (LA Tech)

“The Study of Protein Damage in Aging and Age-Related Diseases in Brain Using BioMEMS and Bioinformatics Tools”
~ June Feng (LA Tech)

“Development of Novel Anti-Cancer Agents” ~ Elahe Mahdavian (LSU-S)

“Regulation of Mouse ES Cell Differentiation into Neurons by Hoxa1”
~ Eduardo Martinez-Ceballos (SUBR)

“Novel Bovine Coronavirus-Based Therapeutics for Human Colorectal Cancer”
~ Yetunde Ogunkoya (SUBR)

“The Study of Apoptosis Using a New Discrete Computational Method”
~ Andrei Paun (LA Tech)

“Targeting HER-2 protein for breast cancer using computational approach”
~ Seetharama Satyanarayanan (ULM)

“Microarray Gene Expression Biclustering using Associative Pattern Mining”
~ Prerna Sethi (LA Tech)

“Assessment of the Molecular Target of Fusarochromanone and Its Analogues”
~ Tara Williams-Hart (LSU-S)